

SOIL SEPARATOR

24" x 300' 0218224300 24300SSF



JUTE MESH

4' x 225' JUTE MESH SOIL SAVER ROLL 42001550

6" 11 GA JUTE STAPLES - 100 PC 42001545

NON-WOVEN FABRIC

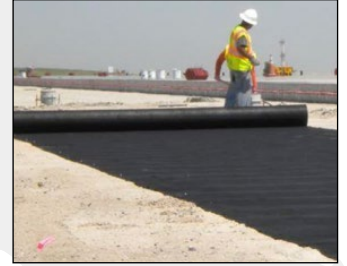
7.5' x 300' 42000915 FF4075360

12.5' x 360' 42000920 40-125-360

15' x 300' 42000925 40-150-300

12.5' x 360' 42001470 140N12.5X360

15' x 360' 42001475 140N15X360



BIO STRAW WATTLE & STRAW WATTLE

8" x 25' 811230 STRAW WATTLE

9" x 25' 811231 BIO STRAW WATTLE

9" x 25' 811231-P BIO STRAW WATTLE PLT 12



WATTLE STAKES

1" x 1" x 18" WATTLE STAKE WSTAKE18

1" x 1" x 18" WATTLE STAKES - 50 PC WSTAKE18-C



POLY BAG - FILLED

- 2000 HR RATED BAGS

1/4 CF - WHITE SAND FILLED 810044

1/2 CF - WHITE SAND FILLED 810048

1/2 CF - WHITE GRAVEL FILLED 810047



EMPTY BAGS

- 2000 HR DOUBLE STITCHED FOR SAND

14" x 26" WHITE POLY BAG W/ TIE 810049

*Other colors available & 4000 HR available.

- 4000 HR + FOR GRAVEL

14" x 26" YELLOW NON WOVEN MONOFILAMENT

BAG WITH TIE 810045

*Other colors available.



RAINSUITS/STEEL-TOE BOOTS

AVAILABLE:

RAINSUITS SIZE L TO 4XL

RAINBOOTS SIZE 7-13



E-ZUP SHELTER BLUE LIGHTWEIGHT & PORTABLE

10' x 10' E-ZUP SHELTER BLUE 42000805 EZVS9104BL

12' x 12' E-ZUP SHELTER BLUE 42000810 EZVS2912BL



POLYFILM

20' x 100' 4 MIL POLYFILM - CLEAR 851210C

20' x 100' 6 MIL POLYFILM - CLEAR 852210C

20' x 100' 10 MIL POLYFILM - CLEAR 853210C

20' x 100' 4 MIL POLYFILM - BLACK 851210B

20' x 100' 6 MIL POLYFILM - BLACK 852210B

20' x 100' 10 MIL POLYFILM - BLACK 853210B



TARPS

10' x 20' TARP 9939300015 T1020BB90

12' x 16' TARP 9939351832 T1216BB70

16' x 20' TARP MED 9939300028 T1620BB90

18' x 24' TARP MED 9939300030 0709115

20' x 30' TARP 9939300033 T2030BB70

20' x 40' TARP 9939300034 767921





100' LED LIGHT STRING

45001440 08-00501

- Hanger hooks included, optional magnetic hook kit
- Lights have rugged protective grids



M18 LED WORKLIGHT
42000590
2354-20 BARE TOOL

HENRY PRODUCTS FOR WET/DRY APPLICATION

208 WET PATCH® ROOF LEAK REPAIR
10.1 OZ TUBE 860118 / 860118-C
.9 GAL 860120 / 860120-C
3.3 GAL 860126
4.75 GAL 860121

208R RUBBERIZED WET PATCH® ROOF LEAK REPAIR
10.1 OZ TUBE 860140 / 860140-C
.9 GAL 860142 / 860142-C
3.3 GAL 860143
107 SEALER & DAMPPROOFER
.9 GAL 107 860105
4.75 GAL 860106



DISPOSAL EQUIPMENT

20 CT 42 GAL CONTRACTOR BAG HK42WC020B 7396322042
STEEL DUST PAN 2002701310 40736
POLY DUST PAN LRG W/HNDL 7179800495 8497



MAXAIR CONFINED SPACE 12" VENTILATOR & HOSE

45000310 HVHF 12 COMBO 7396322042

- 2000 CFM
- 2-Speed Control
- Intake or Exhaust



PUSHBROOMS

24" PUSH BROOMS W/BRACE
636 7179800636
638 7112909424
278AOR 1892871190
857SUS 7179820857
869HDSU 7179820869



SQUEEGEE

24" FLOOR SQUEEGEE - CURVED ETTOR 42007515 4624
36" FLOOR SQUEEGEE - CURVED ETTOR 42007520 4636



60" JOBSITE CHEST

4341992499 CJB638990

- 12 Ga steel
- Bolt cutter-free locking system
- Heavy-duty staked and welded hinge
- 1" steel locking arm holds the lid open



PROPANE HEATERS

DURA HEAT FORCED AIR HEATER GFA40 42001565
SINGLE-HEAD PROPANE HEATER 8930142100 F242100
DOUBLE-HEAD PROPANE HEATER F242650 8930142650



RUBBERMAID MAINTENANCE SUPPLIES

55 GAL BRUTE TRASH CAN 43000235 FG265500GRAY
LID FOR 55 GAL BRUTE TRASH CAN 43000240 FG265400GRAY
BRUTE CADDY BAG CONTAINER 43000245 FG264200YEL
BRUTE TRASH CAN DOLLY 43000255 FG264020BLA
LID FOR 10G BRUTE TRASH CAN 8687601238 FG260900GRAY
10 GAL BRUTE TRASH CAN 8687601247 FG261000GRAY
20 GAL BRUTE TRASH CAN 8687601343 FG262000GRAY
44 GAL BRUTE TRASH CAN GRY 8687601463 FG264360GRAY
32 GAL BRUTE TRASH CAN 8687601467 FG263200GRAY



ELASTOMERIC JOINT SEALANTS

SIKAFLEX -1A ELASTOMERIC JOINT SEALANT / ADHESIVE
WHITE 10.1 OZ CARTRIDGE 338600275 91017 / 338860027C
CAPITOL TAN 10.1 OZ CARTRIDGE 43002150 91012 / 43002155
BLACK 10.1 OZ CARTRIDGE 3388600279 91011 / 3388600031
DARK BRONZE 10.1 OZ CARTRIDGE 43002170 91014 / 43002175
ALUMINUM GRAY 10.1 OZ CARTRIDGE 43002140 91009
LIMESTONE 10.1 OZ CARTRIDGE 43002160 91016 / 43002165
LIMESTONE 20 OZ SAUSAGE 32400360 91007



PREMIUM-GRADE, HIGH-PERFORMANCE, MOISTURE-CURED, 1 COMPONENT, POLYURETHANE BASED, NON-SAG ELASTOMERIC SEALANT.
CAN BE USED IN GREEN AND DAMP CONCRETE APPLICATIONS.

MEETS FEDERAL SPEC TT-S-00230C, TYPE 11, CLASS A, MEETS ASTM C-920, TYPE S, GRADE NS, CLASS 35, USE T, NT, O, M, G, I, A.

6 CF WHEELBARROW

42004542 670154

- Steel tub and handles
- Comfort grip



ROUND OR SQUARE POINT SHOVELS

ROUND POINT SHOVEL 42001825 GTSHR-48
SQUARE POINT SHOVEL 42001830 GTSHS-48

- Hardwood handles



REDGARD WATERPROOFER

1G REDGARD ELASTOMERIC WATERPROOFER
LQWAF3 1018677174

- For stone and tile installation
- 1-coat crack protection
- 2-coat waterproofing
- Dries quickly
- Covers up to 350 SF



RAINBUSTER CAULKING

12 OZ LDRB500 GRAY CAULK GRAY 3388050125
12 OZ LDRB500 GRAY CAULK GRAY (24) 338805012C
12 OZ LDRB500W WHITE CAULK WHT 3388050135
LDRB500W WHITE CAULK WHT (24) 3388050135
12 OZ TOP900WHT WHITE CAULK WHT 3388090129
TOP900WHTC WHITE CAULK WHT (24) 338809012C



PACKOUT™ MODULAR STORAGE SYSTEM



PACKOUT™ LARGE TOOLBOX
4524250534 48-22-8425
• 50 Lb capacity



PACKOUT™ ROLLING TOOLBOX
4524250535 48-22-8426
• 250 Lb capacity



PACKOUT™ CRATE
42000615 48-22-8440
• 50 Lb capacity



FUEL VACUUMS



9 GAL M18™ FUEL VAC
47006025 0910-20



9 GAL M18™ FUEL VAC
47006040 0940-20
• .25 Gal cannister capacity



M18™ FUEL BACKPACK VAC
47006020 0885-20
• 1 Gal cannister capacity

RAM BOARD PRODUCTS

38" x 100' ROLL FLOOR PROTECTION
RAM38100 46 RB 38-100
• Utilizes flex-fiber technology
• Added protection against water, paint, mud & more



2.83" x 164' SEAM TAPE
RAMTAPE RBST 3-164
• Kraft paper backing



MEL-ROL WATERPROOFING MEMBRANE

38.5" x 62.5"
32000295



PERFORATED PIPE

4" x 20' SCH40 PERFORATED PIPE
5482600857 C19AZI



DRAIN SLEEVE

4" x 100' S&D DRAIN SLEEVE
0218204100 04100-10



FIBERGLASS STEP LADDERS

TYPE II 4' 2886508731 FS4004
TYPE 1A 4' 2886520010 FS1504
TWIN - TYPE1A 6' 5175101164 T6206



EXTENSION LADDERS

ALUM TYPE I 16' 5175101215 D1316-2
FBRGLS TYPE 1A 20' 5175101900 D6220-2
FBRGLS TYPE 1A 16' 5175101909 D6216-2
FBRGLS TYPE 1A 24' 5175101911 D6224-2
FBRGLS TYPE 1A 28' 5175101913 D6228-2

BUCKETS

5 GAL RED PLASTIC BUCKET 05050 BUCKET3
5 GAL PLASTIC BUCKET LID 05050 BUCKETLID



The No Bull Solution
For Construction
Site Management

SPILL BULLY
Innovative & Eco-Friendly



▲ **Spill Kits**
Eco-Friendly Absorbents



▲ **Stormwater**
Sediment Control
Erosion Management

▼ **Containment**
Heavy Equipment
Concrete/Paint Washout



2" TRASH PUMP

42001517 QP2TH
• Dual 2" ports
• 1" Max discharge diameter
• Up to 211 gpm



SUMP PUMPS

SUMP PUMP 1HP 73GPM (ST2037) 42001525 SUMP PUMP .25HP 33GPM (YELLSUB) 42001520
SUMP PUMP 1HP 79GPM (ST2040T) 42001530 SUMP PUMP FLOAT SWITCH (SW1A) 42001555
SUMP PUMP 1HP 87GPM (ST2047) 42001535



11 Convenient Locations To Serve You

Anaheim	Buena Park	Corona	Costa Mesa	Laguna Beach	
1220 E. Ball Rd. Anaheim, CA (714) 772-5444	6586 Beach Blvd. Buena Park, CA (714) 522-2864	150 W. Blaine St. Corona, CA (951) 278-4000	1100 Bristol St. Costa Mesa, CA (714) 556-1500	1765 Laguna Cyn. Rd. Laguna Beach, CA (949) 494-6538	
Lake Forest	Los Alamitos	Northridge	Pasadena	San Juan Capistrano	South Bay
23132 Orange Ave. Lake Forest, CA (949) 830-3600	10742 Los Alamitos Blvd. Los Alamitos, CA (562) 346-2100	18537 Parthenia St. Northridge, CA (818) 349-6701	3003 E. Colorado Blvd. Pasadena, CA (626) 993-2100	25865 Stonehill Dr. San Juan Capistrano, CA (949) 496-5765	2600 Del Amo Blvd. Torrance, CA (424) 350-3000

Connect With Us.



GanahlLumber.com